



**black+white**  
a selection of 20th century  
drawings and prints

# black+white

## a selection of 20th century drawings and prints

KRAUSHAAR  
GALLERIES INC.

74 East 79th Street, Suite 9B  
New York, NY 10021  
212.288.2558

In our new role as private dealers we are pleased to present our first catalogue of works on paper. It begins with a rare Sloan drawing for *The Masses*, continues the modernism of Hartley and Kuniyoshi, the developments in American abstraction of Dehner and Slobodkina and concludes with a quiet Heliker wash drawing from the 1960s.

As Kraushaar Galleries begins its 122nd year in business, we continue to work with both 20th Century American paintings, sculpture and works on paper and selected contemporary artists. We look forward to your visit in our new location.

Carole Pesner & Katherine Degn







This print contains portraits of Franklin D. Roosevelt's cabinet.



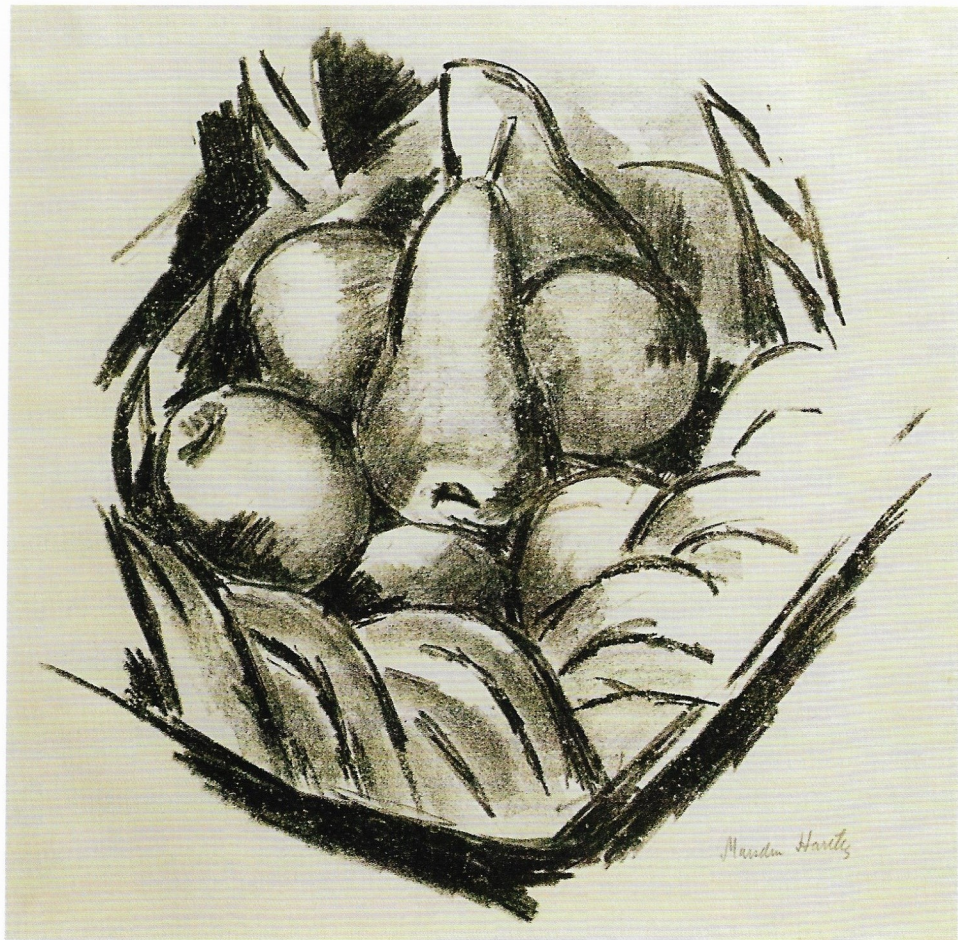


JEROME MYERS - NY 1907

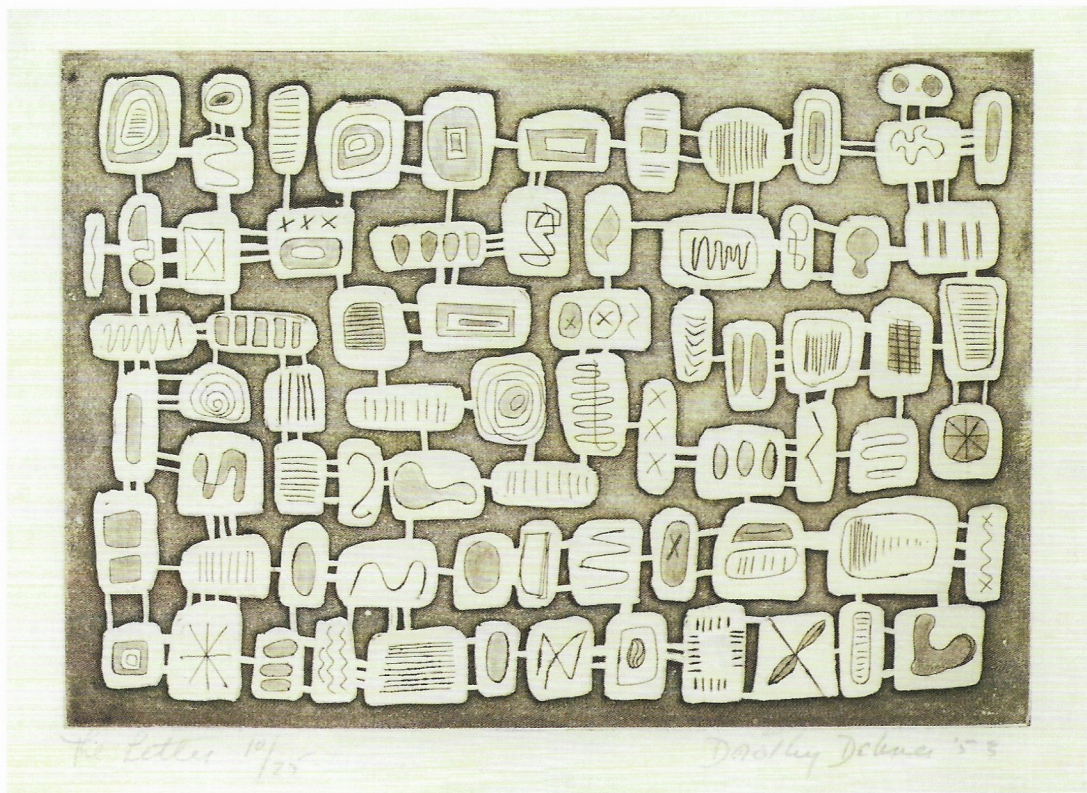
24











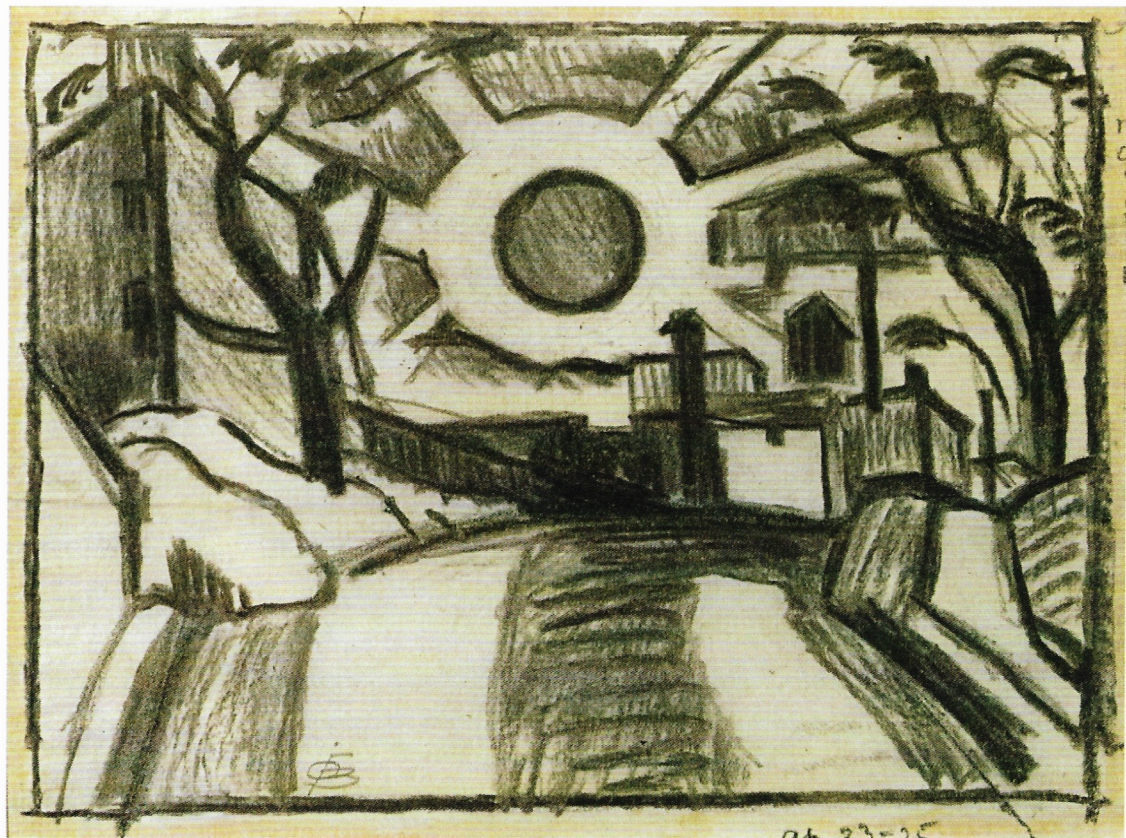




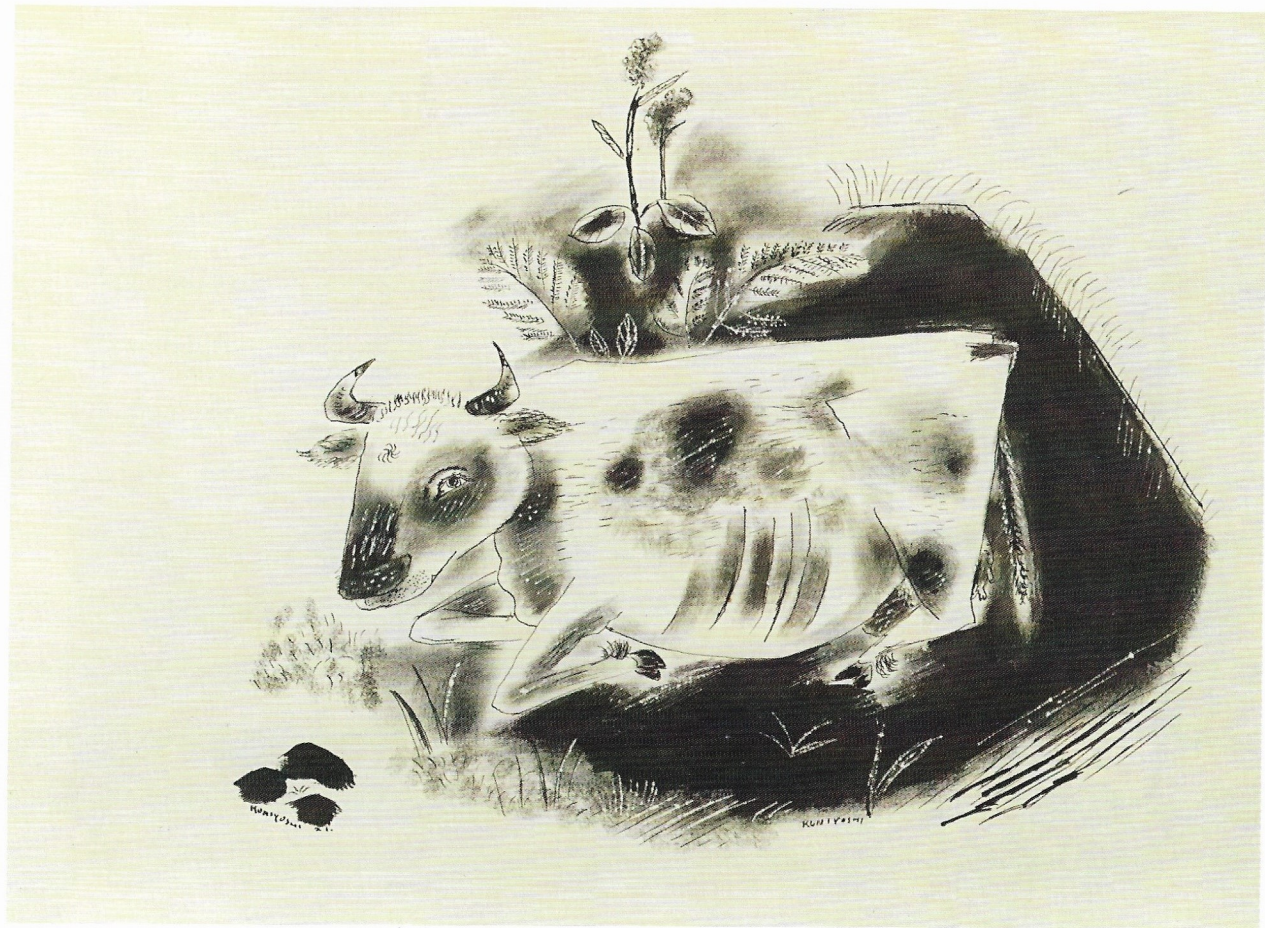




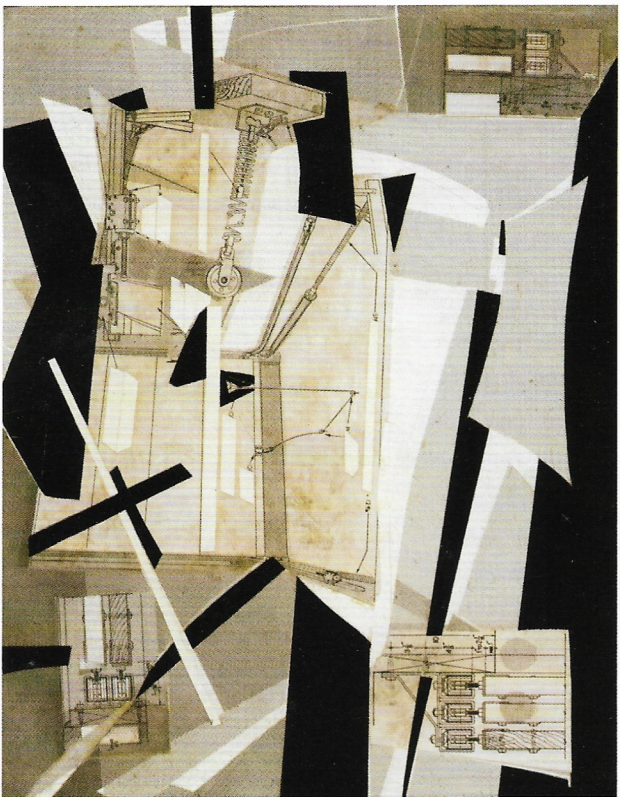


















**1. John Sloan** (1871–1951)

“The extreme Left; ‘Why don’t those strikers do something—let a few of them get shot, and it’ll look as if they meant business.’”  
*(The Masses, vol. 4, Sept. 1913)*  
 ink, crayon on paper  
 18 ¼ × 12 ½ inches

**2. Peggy Bacon** (1895–1987)

Post-Haste, c.1935  
 drypoint  
 5 ½ × 11 ⅞ inches

**3. Jerome Myers** (1867–1940)

Hubers Museum, 1907  
 pencil on paper  
 7 ½ × 10 inches

**4. Joseph Stella** (1877–1946)

Study of a Man  
 pencil on paper  
 5 × 4 ½ inches

**5. Marsden Hartley** (1877–1943)

Fruit Basket  
 lithograph  
 14 ¼ × 14 ¼ inches (plate)

**6. Dorothy Dehner** (1901–1994)

The Letter, 1953  
 engraving / edition 10 of 25  
 4 ⅞ × 6 ⅞ inches

**7. George Luks** (1867–1933)

The Park, c.1910  
 crayon on paper  
 7 ¾ × 10 ⅞ inches

**8. Marguerite Zorach** (1887–1968)

Trail in the Mountains, 1912  
 ink on paper  
 12 × 9 inches

**9. Henry Lee McFee** (1886–1953)

Out of the Window, Woodstock, c.1927  
 pencil on paper  
 23 × 17 ¼ inches

**10. Oscar Bluemner** (1867–1938)

Sketch for ‘Sunset’  
 charcoal on paper  
 5 ¼ × 7 ½ inches

**11. Yasuo Kuniyoshi** (1893–1953)

Cow, 1921  
 ink on paper  
 11 ¼ × 15 inches

**12. Esphyr Slobodkina** (1908–2002)

Inner Works, 1960s  
 collage on paper  
 5 ¾ × 4 ½ inches

**13. Gaston Lachaise** (1882–1935)

Woman with Long Neck  
 wash on paper  
 18 × 12 inches

**14. John Heliker** (1909–2000)

Still Life with Shades of Gray, c.1965  
 graphite with watercolor on paper  
 9 ¾ × 14 inches

KRAUSHAAR  

---

GALLERIES INC.

74 East 79th Street, Suite 9B, New York, NY 10021 • 212.288.2558 • [gallery@kraushaargalleries.com](mailto:gallery@kraushaargalleries.com)

BY APPOINTMENT