

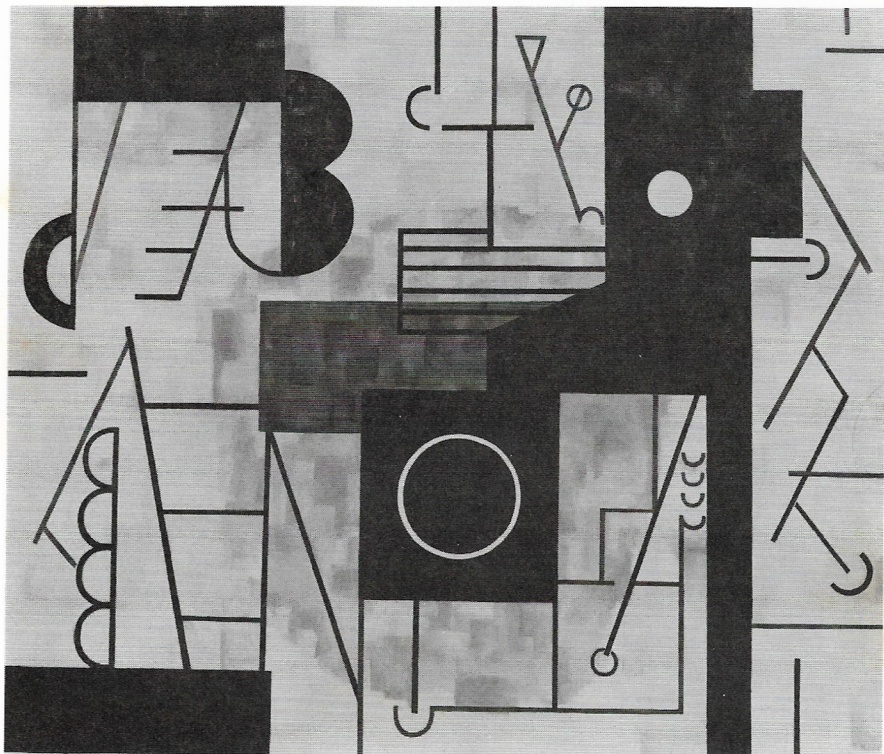
EIGHT BY EIGHT
AMERICAN ABSTRACT PAINTING
SINCE 1940

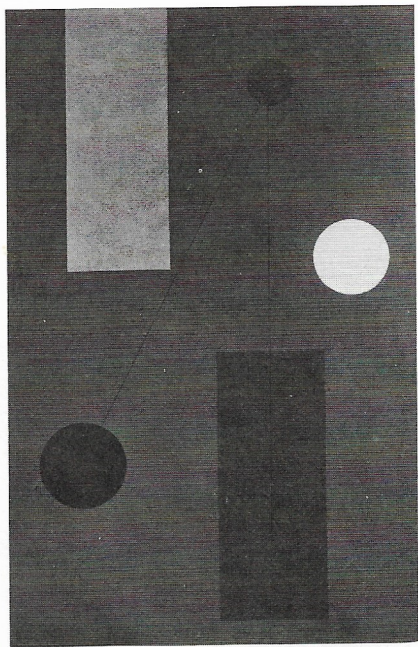
ILYA BOLOTOWSKY
SUZY FRELINGHUYSEN
ALBERT E. GALLATIN
ALICE TRUMBULL MASON
GEORGE L. K. MORRIS
A. D. F. REINHARDT
CHARLES G. SHAW
ESPHYR SLOBODKINA

OCTOBER 1 TO OCTOBER 25, 1975
WASHBURN GALLERY, 820 MADISON AVENUE, NEW YORK

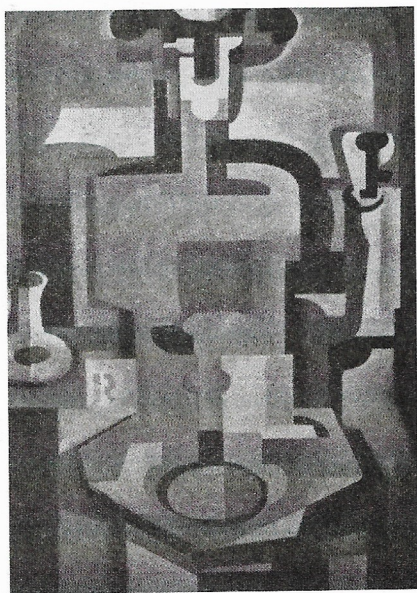
Eight by Eight, American Abstract Painting since 1940 was held at the Philadelphia Museum of Art from March 7 to April 1, 1945. Albert Galatin selected the exhibition with the help of Henry Clifford, Curator, and a Statement in the catalogue was written by George L. K. Morris. Although it has not been possible to locate all sixty-four works from the original exhibition, enough paintings have been found, combined with others from those five years between 1940 and 1945, to realize the outlines and to suggest the development of certain abstract ideas then current.

We wish to thank the following galleries for their interest and cooperation which have made this exhibition possible: Grace Borgenicht Gallery, Hirschl & Adler Galleries, Marlborough Gallery and Zabriskie Gallery.





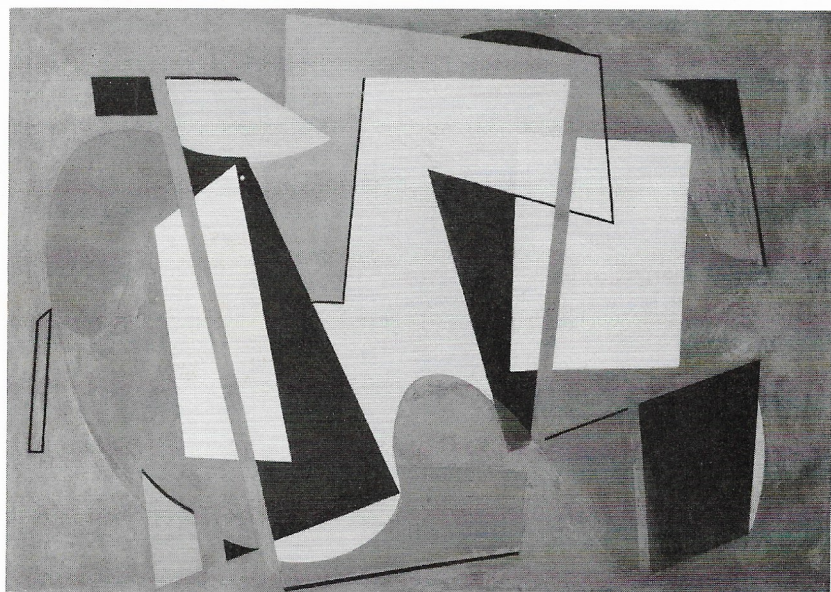
14.



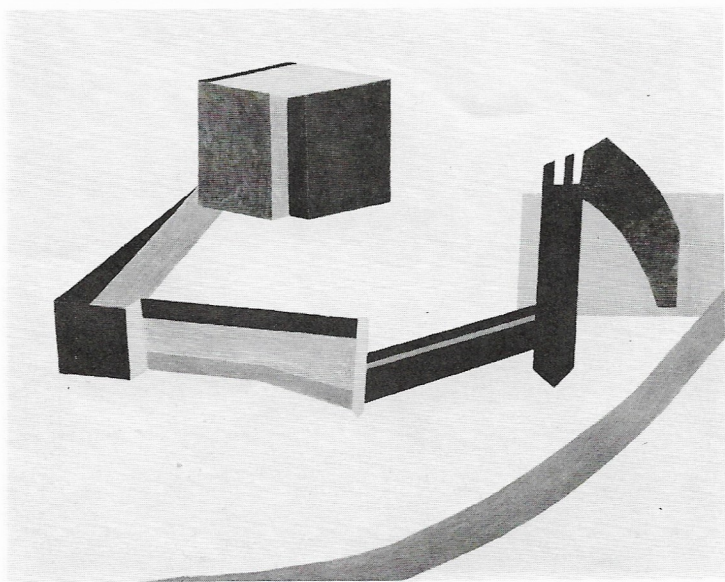
4.



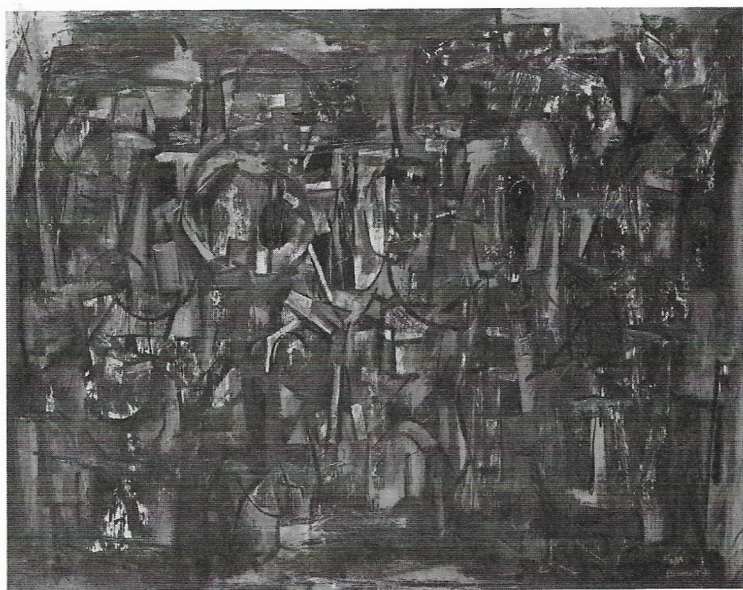
18.



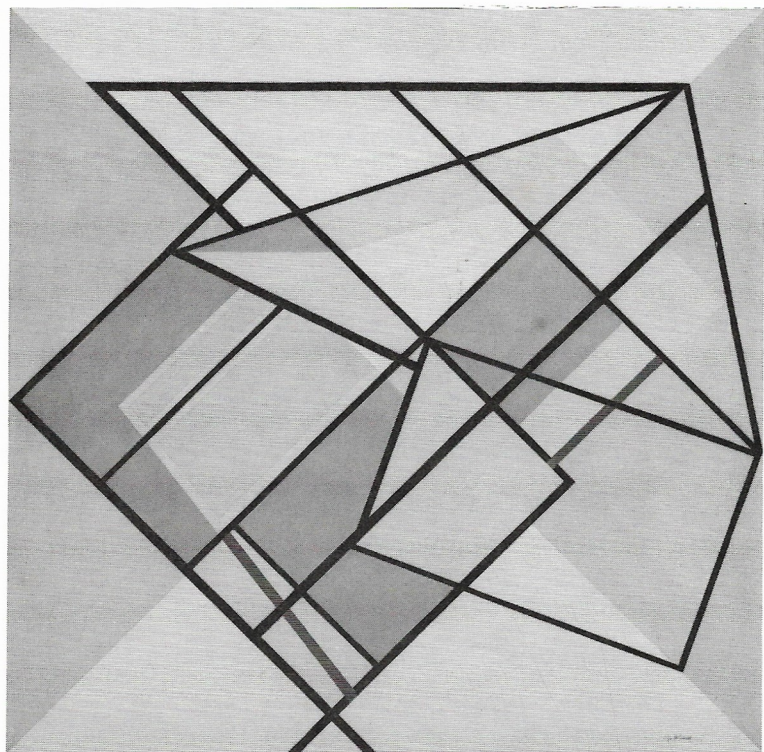
9.



5.



12.



Ilya Bolotowsky (1907-)

1. *Construction in a Square**, 1940, 30 x 30 in.
2. *Marine Abstraction**, 1940, 20¾ x 32¼ in.
3. *Blue Double Abstraction**, 1942, 30 x 67 in.

Suzy Frelinghuysen (1912-)

4. *Composition — Toreador Drinking**, 1944, 51 x 35 in.

Albert E. Gallatin (1882-1952)

5. *Kenilworth Castle: Aerial View*, 1937, 16 x 20 in.
6. *Composition*, 1939-40, 30 x 20 in.

Alice Trumbull Mason (1904-1971)

7. *The Necessity of Yellow**, 1941, 42 x 32 in.
8. *White Appearing**, 1942, 14 x 16 in.
9. *Brilliance of Red**, 1943, 20 x 28 in.

George L. K. Morris (1905-1975)

10. *Mural Composition**, 1941, 52 x 62 in.
11. *Spatial Tension**, 1944, 37 x 27 in.

A. D. F. Reinhardt (1913-1967)

12. *Abstract Painting — Dark Symbol*, 1941, 16 x 20 in.
13. *Four Gouaches*, 1943, 16½ x 57 in.

Charles G. Shaw (1892-1974)

14. *Untitled*, 1940, 39¼ x 26 ¼ in.
15. *Untitled*, 1941, 18 x 16 in.
16. *Untitled*, 1941, 18 x 16 in.

Esphyr Slobodkina (1908-)

17. *Elegy**, 1936-40, 32 x 17 in.
18. *Large Picture**, 1943, 35 x 44 in.

*Included in 1945 exhibition.